

# ROTARY ANCHOR



2009/2010 Rotary Theme

**New London Rotary Club**  
**District 7980 Club 6741**  
 P.O. Box 654 New London, CT 06320  
 www.newlondonrotary.org

**Meeting Thursday December 17, 2009**

**New London AM Club at City News**



"America's Tall Ship" USCG Barque *Eagle*

## Dec 17 - Holiday Literacy Program

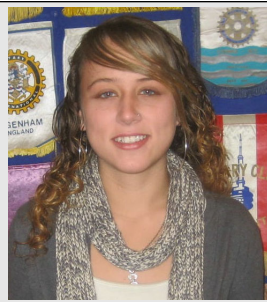
Dec 24 - Special Piano program by Ian Frenkel

<b>Reporters:</b>	Dec 17	Alan Lyon
	Dec 24	Robin Aitcheson
<b>Greeter:</b>	Dec 17	Frank Laycock
	Dec 24	Rod White
<b>Song Leader:</b>	Dec 17	Peg Curtin
	Dec 24	Mille Devine
<b>Birthdays</b>	None	
<b>Anniversaries</b>	Dec 17	Alan Mayer & Gail Schwenker-Mayer
	Dec 19	Alejandro Melendez-Cooper & Maria Amparo Cruz-Saco
	Dec 20	John Bysko & Jane
	Dec 23	Lorraine Allen & Doug

## Student of the Year

*New London Adult Education*  
**Christa Easterly**

Christa enrolled in NLAE in September and is a straight "A" student. She is making plans to attend a four-year school to pursue a career in bio-medical engineering. Christa now has a great understanding of the value of a full education. Congratulations!



## Rotary and Elks team up for Good Work.

New London Elks Lodge #360's Exalted Ruler, Michele Brighton and Treasurer Douglas Allen presented to our President Anna a check for \$300 to be used for the Annual Holiday Food Drive.

President Anna was also presented with a "thank you" plaque for our donation to the Elks Fund Drive for the Veteran's Day Festivities held at the Elks on November 15, 2009. Rotary's donation was used to ensure transportation for the Veterans from the Rocky Hill V.A. Hospital to the New London Elks Lodge, so they could be honored for their service to our country which is an annual event at the Lodge. Thanks go both ways and this shows how, when two service organizations work together, it can benefit many more people than just working individually.



## Program November 19, 2009

By: Lorraine Allen

The first part of today's program was a Foundation Assembly moderated by Mike Stryker. Mike pointed out in how many positive ways donations to the Foundation are used and just how far any money given goes.

Mike suggested that gifting could be in the form of appreciated stock in a taxable account which, when sold and given to the Foundation incurs no capital gains tax. You could indicate a percentage bequest in your will, or also designate a percentage amount in an IRA account. The "\$100 every year, every Rotarian" campaign is one of the easiest ways to contribute. The Foundation will, following your instructions, automatically charge your credit card annually. This is so simple and does so much good that it really is the optimum way for all of us to support the Foundation. Please think about doing so - it's fool-proof and it'll make you feel GREAT!

Our GSE leader, Ellen Paul, from Rep. Joe Courtney's office presented us with images and memories of her group's visit to Australia, district 9750. During their four week stay, they traveled pretty extensively throughout the district, visiting the capital, Canberra. There, they saw Parliament House (looks just like the one in London) and the American Embassy.

Week 4 was spent in Sydney where two images were very striking - the beautiful water and, of course, the gorgeous opera house. They met three members of Parliament who gave them an overview of the Australian political process.

In Australia you have to apply to become a member of a political party and (this is great) voting ins compulsory! If you don't show up to vote, a \$250 fee is levied against you. Now there's a system that here in the U.S. would either garner a great deal of money or ensure huge numbers at the polls.

There are still discomfort levels with the racism against the aboriginal. Women also seem to be not as engaged in public life as they could be. An Aussie quote "No worries, Mate". The American response "I'm American, I worry".

Ellen felt that she had benefited greatly from her trip and was grateful to have been chosen to go. She loved learning the cultural differences and now has greater confidence and is more comfortable with public speaking.

